

WET SET DOWELS TO MATCH
VERTICAL REINFORCEMENT
BETWEEN POUR OR AS
SPECIFIED

MIN $\frac{1}{2}$ " (13mm) GYPSUM BOARD

FINISHED CONCRETE
TOPPING

HOLLOW CORE
PRECAST SLAB

HOLLOW CORE
PRECAST SLAB

FINISH AS SPECIFIED

FINISH AS SPECIFIED

FORM PANELS c/w INSERT
WEBS- CUT TO SUIT FLOOR
CONNECTION- ADDITIONAL
FORM SUPPORT AS
REQUIRED

MASONITE BEARING PAD

FIELD CUT TAPER TO PROVIDE
ADDITIONAL CONCRETE
BEARING SURFACE

HORIZ/VERT REINFORCEMENT
AS PER CODE OR AS
SPECIFIED (SEE NOTE 1)

DOWELS FIELD BENT AND
GROUTED INTO SHEAR KEY
JOINT BETWEEN PANELS AS
SPECIFIED

NUDURA 6" (152mm)
STANDARD FORM UNIT

MIN $\frac{1}{2}$ " (13mm) GYPSUM BOARD

NOTES:

1) FOR OPTIMAL REINFORCEMENT PLACEMENT IN THE NUDURA FORM,
SPACING OF HORIZONTAL REINFORCEMENT TO BE SPECIFIED AT 18"
(457mm) O.C. AND VERTICAL REINFORCEMENT TO BE SPECIFIED AT
MULTIPLES OF 8" (203mm) O.C. REFER TO NUDURA REINFORCEMENT
PLACEMENT DETAILS.

This detail is for general informational purposes only. The project design professional determines, in its sole discretion, whether this detail or a functionally equivalent detail is best suited for the project with respect to any architecture, engineering, and design requirements, including any local building code requirements. If this document is not reviewed and the product is not approved for use by a licensed design professional, the customer agrees that the detail may contain substantive flaws requiring correction, and hereby releases Tremco CPG Inc. from any and all liability related to the design and installation of the product. This detail is subject to change without notice. Contact Tremco to ensure you have the most recent version.

Non-Combustible Construction - Demising Wall Intermediate Floor Connections



Nudura Technical Support: 866-468-6299
International: +1 705-726-9499

Detail: Nudura 6" (152mm) Form Unit, Hollow Core Precast Slab,
Bearing Demising Wall

Drawn by: KS

Checked by: KS

Scale: 1:8

Revision #: 01

Revised by: KAB

Date: 3/13/2024

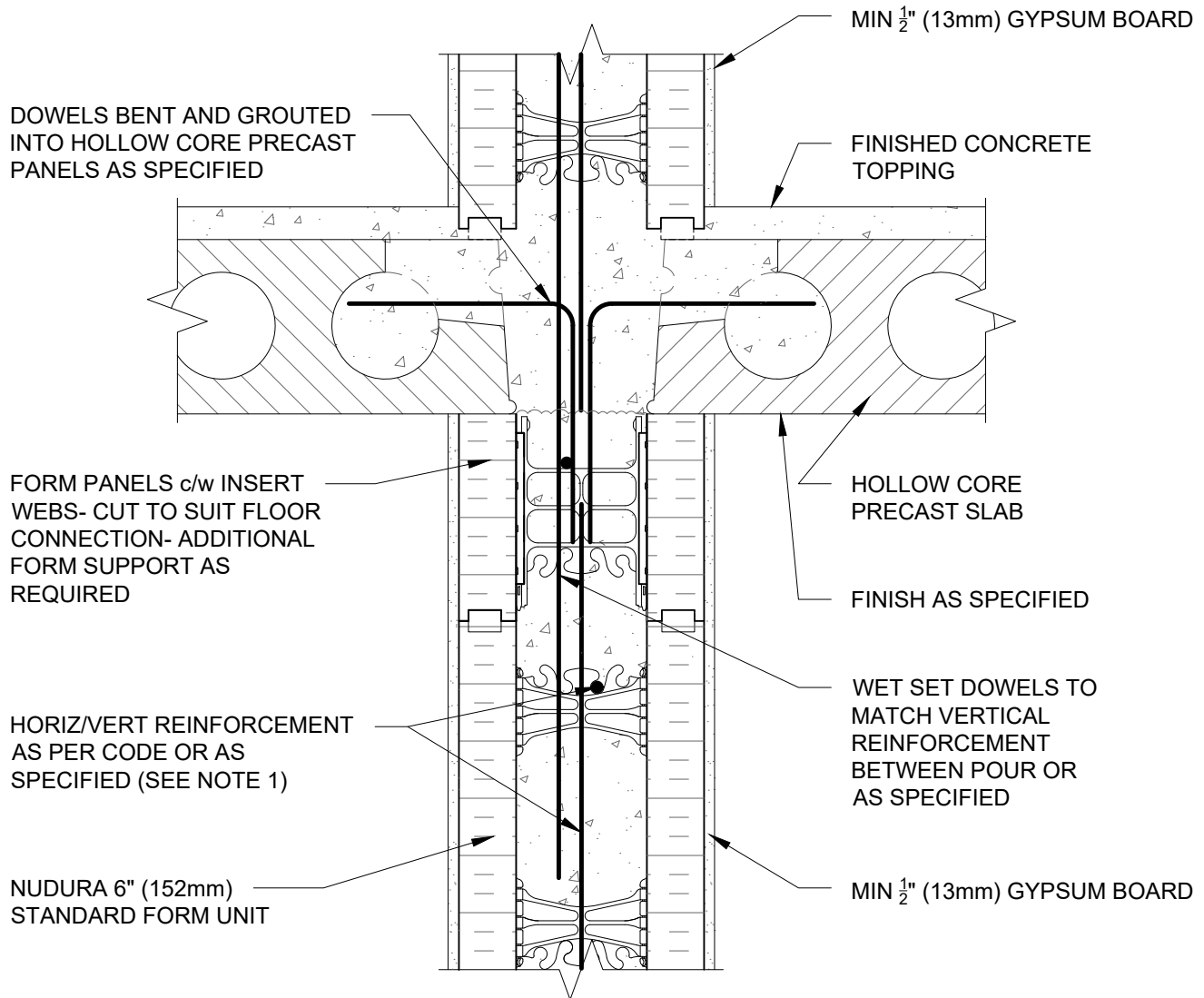
File Name:

G6A01



Construction Products Group

www.tremcocpg.com



NOTES:

1) FOR OPTIMAL REINFORCEMENT PLACEMENT IN THE NUDURA FORM, SPACING OF HORIZONTAL REINFORCEMENT TO BE SPECIFIED AT 18" (457mm) O.C. AND VERTICAL REINFORCEMENT TO BE SPECIFIED AT MULTIPLES OF 8" (203mm) O.C. REFER TO NUDURA REINFORCEMENT PLACEMENT DETAILS.

This detail is for general informational purposes only. The project design professional determines, in its sole discretion, whether this detail or a functionally equivalent detail is best suited for the project with respect to any architecture, engineering, and design requirements, including any local building code requirements. If this document is not reviewed and the product is not approved for use by a licensed design professional, the customer agrees that the detail may contain substantive flaws requiring correction, and hereby releases Tremco CPG Inc. from any and all liability related to the design and installation of the product. This detail is subject to change without notice. Contact Tremco to ensure you have the most recent version.

Non-Combustible Construction - Demising Wall Intermediate Floor Connections



Nudura Technical Support: 866-468-6299
International: +1 705-726-9499

Detail: Nudura 6" (152mm) Form Unit, Hollow Core Precast Slab,
Non-Bearing Demising Wall

Drawn by: KS

Checked by: KS

Scale: 1:8

Revision #: 01

Revised by: KAB

Date: 3/13/2024

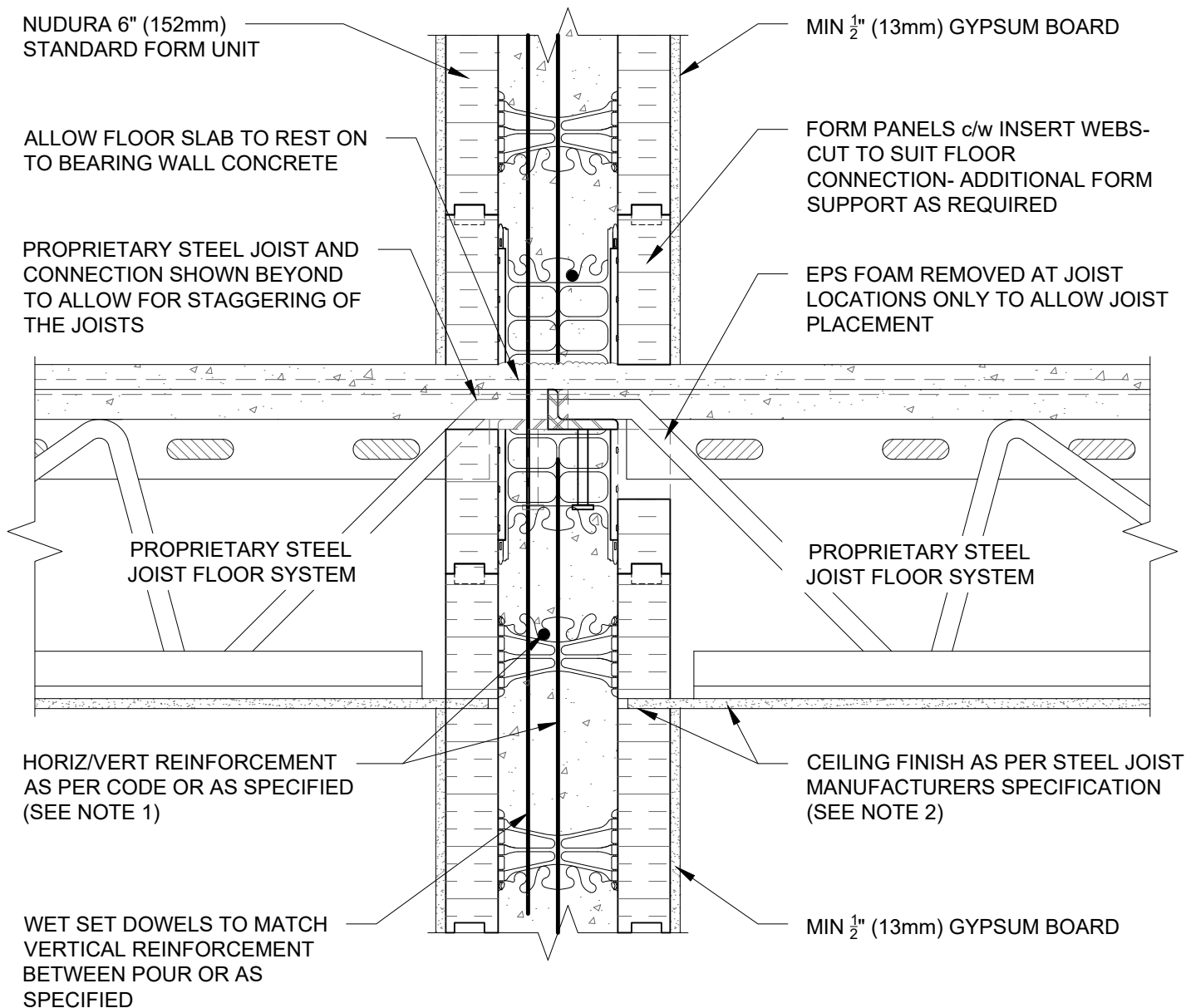
www.tremcocpg.com

File Name:

G6A02



Construction Products Group



NOTES:

1) FOR OPTIMAL REINFORCEMENT PLACEMENT IN THE NUDURA FORM, SPACING OF HORIZONTAL REINFORCEMENT TO BE SPECIFIED AT 18" (457mm) O.C. AND VERTICAL REINFORCEMENT TO BE SPECIFIED AT MULTIPLES OF 8" (203mm) O.C. REFER TO NUDURA REINFORCEMENT PLACEMENT DETAILS.

2) WHERE GYPSUM BOARD IS REQUIRED TO COMPLETE FIRE RATED ASSEMBLY, EPS FOAM KERF CUT TO ENABLE CEILING FINISH TO PROVIDE THERMAL BARRIER CONTACT TO CONCRETE.

This detail is for general informational purposes only. The project design professional determines, in its sole discretion, whether this detail or a functionally equivalent detail is best suited for the project with respect to any architecture, engineering, and design requirements, including any local building code requirements. If this document is not reviewed and the product is not approved for use by a licensed design professional, the customer agrees that the detail may contain substantive flaws requiring correction, and hereby releases Tremco CPG Inc. from any and all liability related to the design and installation of the product. This detail is subject to change without notice. Contact Tremco to ensure you have the most recent version.

Non-Combustible Construction - Demising Wall Intermediate Floor Connections



Nudura Technical Support: 866-468-6299
International: +1 705-726-9499

Detail: Nudura 6" (152mm) Form Unit, Proprietary Steel Joist Floor System, Bearing Demising Wall

Drawn by: KS

Checked by: KS

Scale: 1:8

Revision #: 01

Revised by: KAB

Date: 3/13/2024

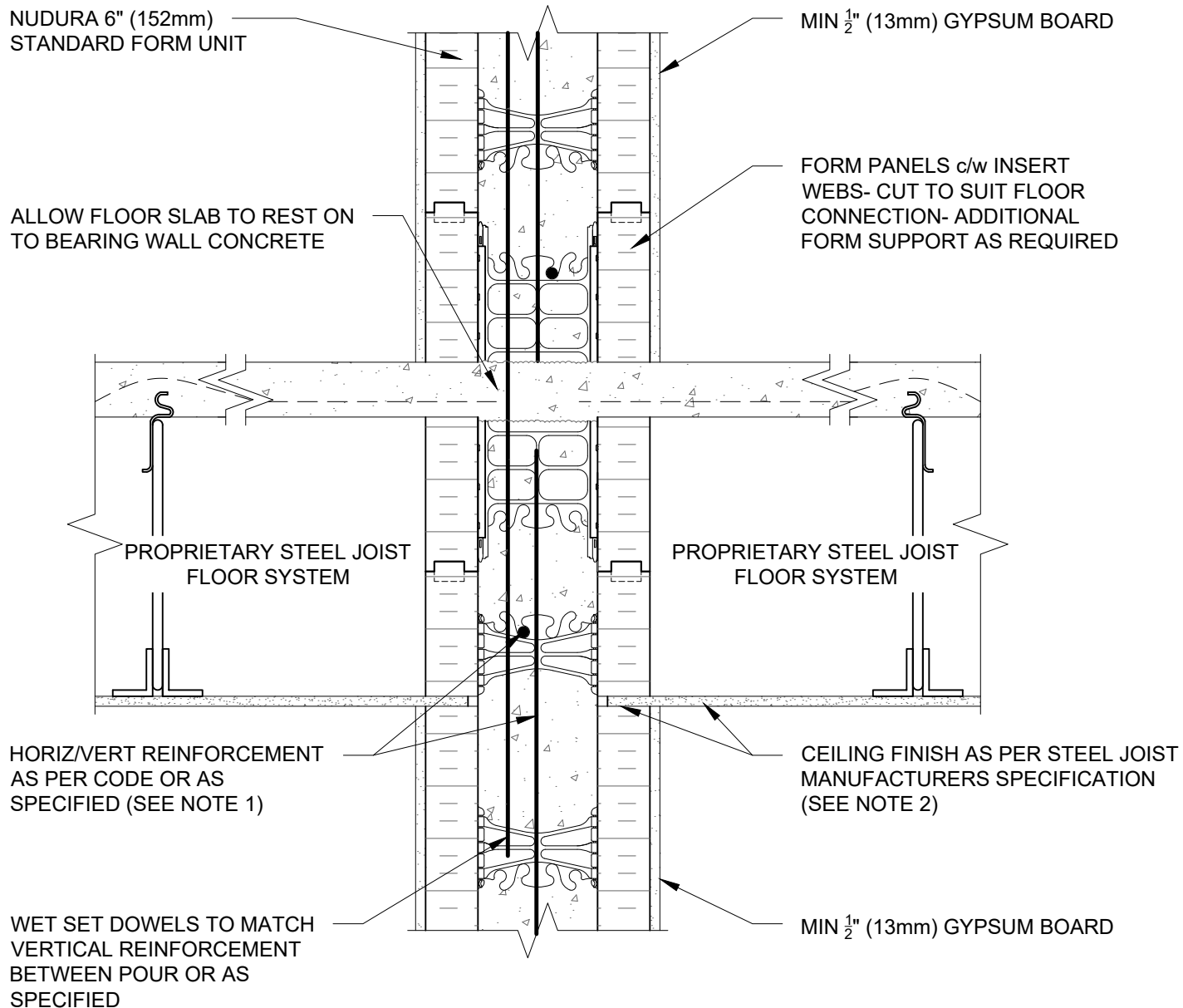
File Name:

G6B01



Construction Products Group

www.tremcocpg.com



NOTES:

1) FOR OPTIMAL REINFORCEMENT PLACEMENT IN THE NUDURA FORM, SPACING OF HORIZONTAL REINFORCEMENT TO BE SPECIFIED AT 18" (457mm) O.C. AND VERTICAL REINFORCEMENT TO BE SPECIFIED AT MULTIPLES OF 8" (203mm) O.C. REFER TO NUDURA REINFORCEMENT PLACEMENT DETAILS.

2) WHERE GYPSUM BOARD IS REQUIRED TO COMPLETE FIRE RATED ASSEMBLY, EPS FOAM KERF CUT TO ENABLE CEILING FINISH TO PROVIDE THERMAL BARRIER CONTACT TO CONCRETE.

This detail is for general informational purposes only. The project design professional determines, in its sole discretion, whether this detail or a functionally equivalent detail is best suited for the project with respect to any architecture, engineering, and design requirements, including any local building code requirements. If this document is not reviewed and the product is not approved for use by a licensed design professional, the customer agrees that the detail may contain substantive flaws requiring correction, and hereby releases Tremco CPG Inc. from any and all liability related to the design and installation of the product. This detail is subject to change without notice. Contact Tremco to ensure you have the most recent version.

Non-Combustible Construction - Demising Wall Intermediate Floor Connections



Nudura Technical Support: 866-468-6299
International: +1 705-726-9499

Detail: Nudura 6" (152mm) Form Unit, Proprietary Steel Joist Floor System,
Non-Bearing Demising Wall

Drawn by: KS

Checked by: KS

Scale: 1:8

Revision #: 01

Revised by: KAB

Date: 3/13/2024

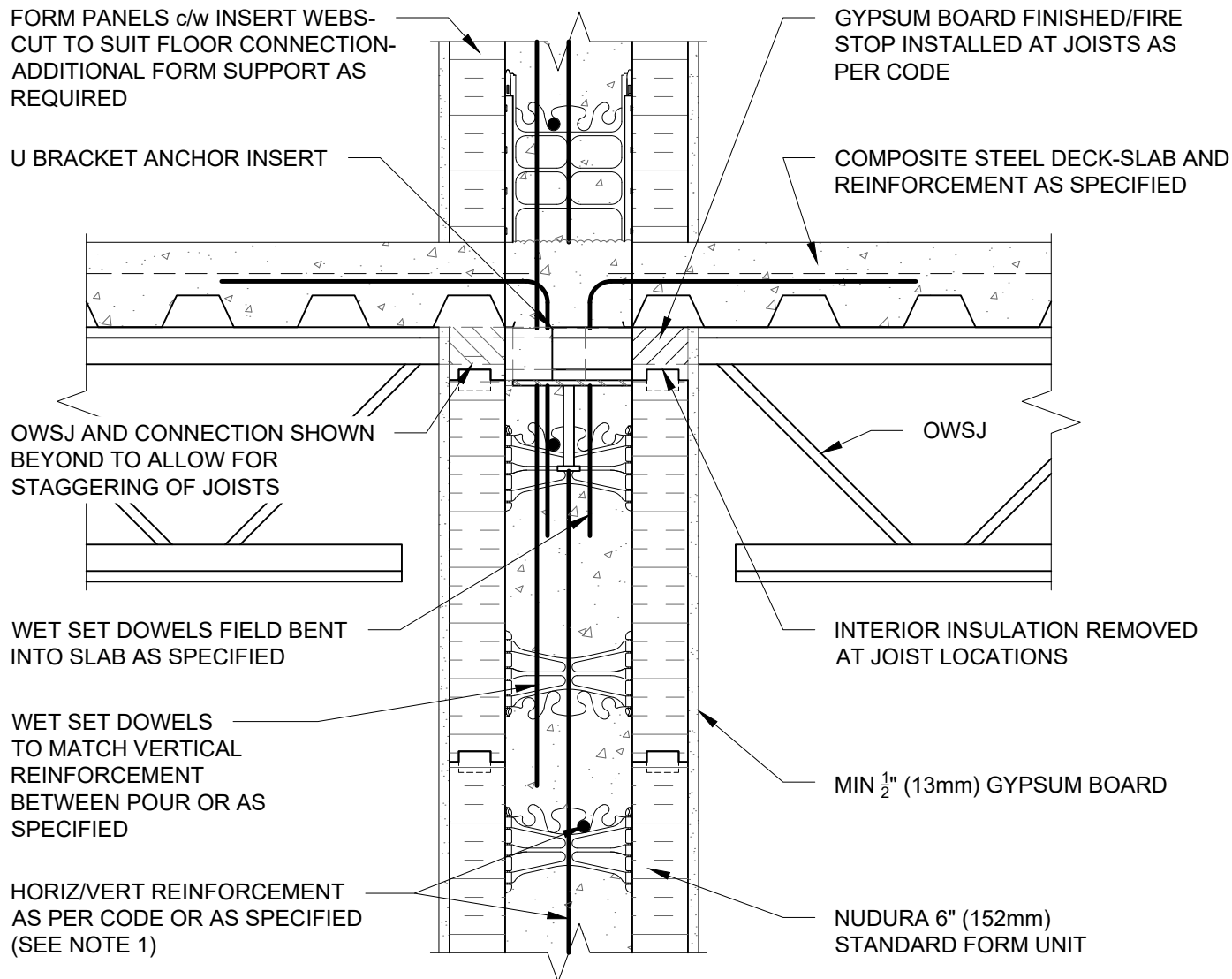
File Name:

G6B02



Construction Products Group

www.tremcocpg.com



NOTES:

1) FOR OPTIMAL REINFORCEMENT PLACEMENT IN THE NUDURA FORM, SPACING OF HORIZONTAL REINFORCEMENT TO BE SPECIFIED AT 18" (457mm) O.C. AND VERTICAL REINFORCEMENT TO BE SPECIFIED AT MULTIPLES OF 8" (203mm) O.C. REFER TO NUDURA REINFORCEMENT PLACEMENT DETAILS.

This detail is for general informational purposes only. The project design professional determines, in its sole discretion, whether this detail or a functionally equivalent detail is best suited for the project with respect to any architecture, engineering, and design requirements, including any local building code requirements. If this document is not reviewed and the product is not approved for use by a licensed design professional, the customer agrees that the detail may contain substantive flaws requiring correction, and hereby releases Tremco CPG Inc. from any and all liability related to the design and installation of the product. This detail is subject to change without notice. Contact Tremco to ensure you have the most recent version.

Non-Combustible Construction - Demising Wall Intermediate Floor Connections



Nudura Technical Support: 866-468-6299
International: +1 705-726-9499

Detail: Nudura 6" (152mm) Form Unit, Composite Steel Deck-Slab, Steel Joists on Bearing Demising Wall

Drawn by: KS

Checked by: KS

Scale: 1:8

Revision #: 01

Revised by: KAB

Date: 3/13/2024

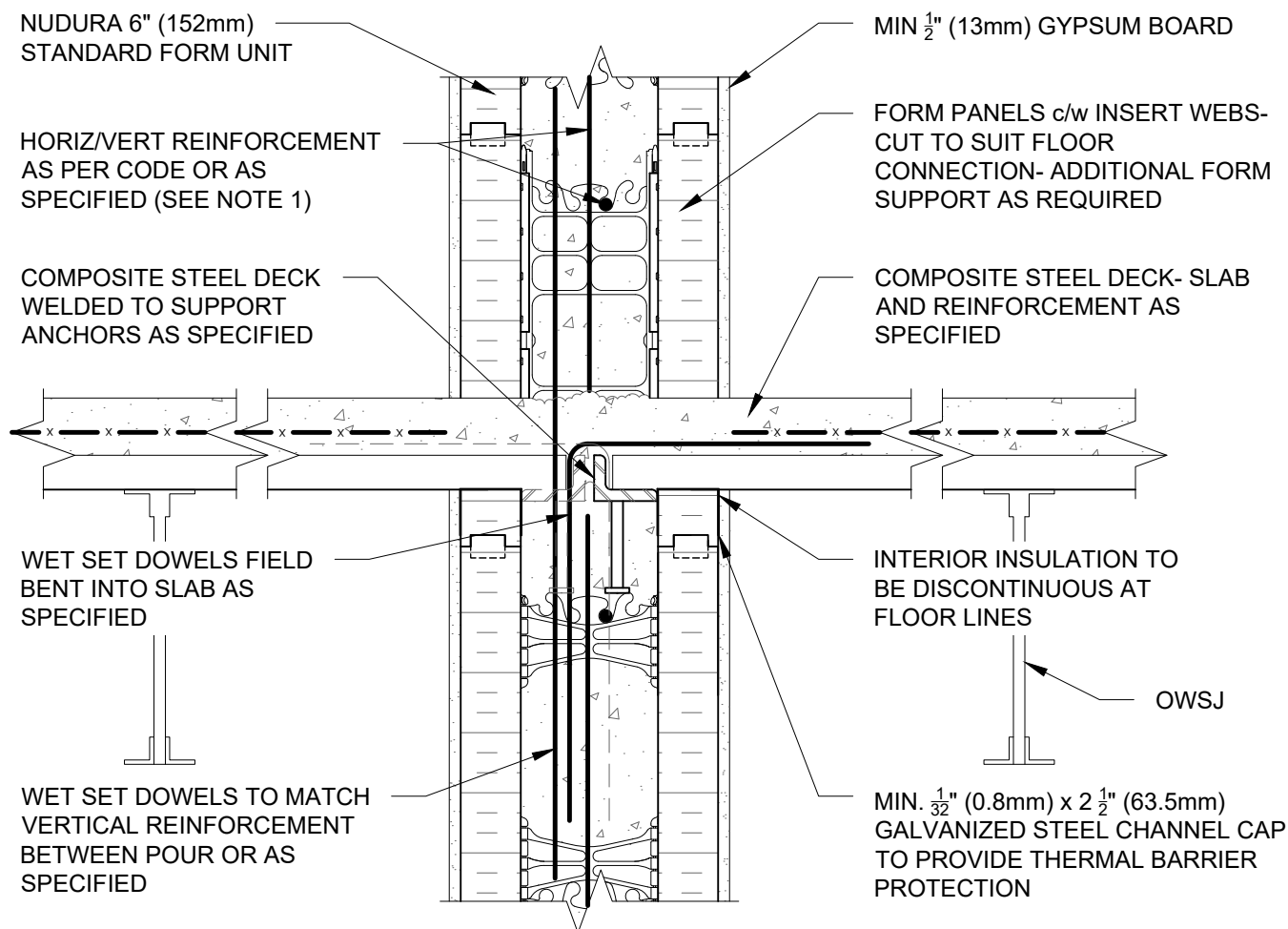
File Name:

G6C01



Construction Products Group

www.tremcocpg.com



NOTES:

1) FOR OPTIMAL REINFORCEMENT PLACEMENT IN THE NUDURA FORM, SPACING OF HORIZONTAL REINFORCEMENT TO BE SPECIFIED AT 18" (457mm) O.C. AND VERTICAL REINFORCEMENT TO BE SPECIFIED AT MULTIPLES OF 8" (203mm) O.C. REFER TO NUDURA REINFORCEMENT PLACEMENT DETAILS.

This detail is for general informational purposes only. The project design professional determines, in its sole discretion, whether this detail or a functionally equivalent detail is best suited for the project with respect to any architecture, engineering, and design requirements, including any local building code requirements. If this document is not reviewed and the product is not approved for use by a licensed design professional, the customer agrees that the detail may contain substantive flaws requiring correction, and hereby releases Tremco CPG Inc. from any and all liability related to the design and installation of the product. This detail is subject to change without notice. Contact Tremco to ensure you have the most recent version.

Non-Combustible Construction - Demising Wall Intermediate Floor Connections



Nudura Technical Support: 866-468-6299
International: +1 705-726-9499

Detail: Nudura 6" (152mm) Form Unit, Composite Steel Deck-Slab, Steel Joists on Non-Bearing Demising Wall

Drawn by: KS

Checked by: KS

Scale: 1:8

Revision #: 01

Revised by: KAB

Date: 3/13/2024

File Name:

G6C02



Construction Products Group

www.tremcocpg.com

NUDURA 6" (152mm)
STANDARD FORM UNIT

MIN ½" (13mm) GYPSUM BOARD

HORIZ/VERT REINFORCEMENT
AS PER CODE OR AS
SPECIFIED (SEE NOTE 1)

INSULATED CONCRETE
FLOOR FORM INSTALLED AS
PER MANUFACTURERS
SPECIFICATIONS

WET SET DOWELS FIELD
BENT INTO SLAB AS
SPECIFIED

THERMAL BARRIER AS PER
FLOOR MANUFACTURERS
SPECIFICATION

WET SET DOWELS TO MATCH
VERTICAL REINFORCEMENT
BETWEEN POUR OR AS
SPECIFIED

TEMPORARY STEEL ANGLE

NUDURA 6" (152mm)
HEIGHT ADJUSTER TIE

NOTES:

1) FOR OPTIMAL REINFORCEMENT PLACEMENT IN THE NUDURA FORM, SPACING OF HORIZONTAL REINFORCEMENT TO BE SPECIFIED AT 18" (457mm) O.C. AND VERTICAL REINFORCEMENT TO BE SPECIFIED AT MULTIPLES OF 8" (203mm) O.C. REFER TO NUDURA REINFORCEMENT PLACEMENT DETAILS.

This detail is for general informational purposes only. The project design professional determines, in its sole discretion, whether this detail or a functionally equivalent detail is best suited for the project with respect to any architecture, engineering, and design requirements, including any local building code requirements. If this document is not reviewed and the product is not approved for use by a licensed design professional, the customer agrees that the detail may contain substantive flaws requiring correction, and hereby releases Tremco CPG Inc. from any and all liability related to the design and installation of the product. This detail is subject to change without notice. Contact Tremco to ensure you have the most recent version.

Non-Combustible Construction - Demising Wall Intermediate Floor Connections



Nudura Technical Support: 866-468-6299
International: +1 705-726-9499

Detail: Nudura 6" (152mm) Form Unit, ICFS Connection, ICFS Resting on Form, Bearing Demising Wall

Drawn by: KS

Checked by: KS

Scale: 1:8

Revision #: 01

Revised by: KAB

Date: 3/13/2024

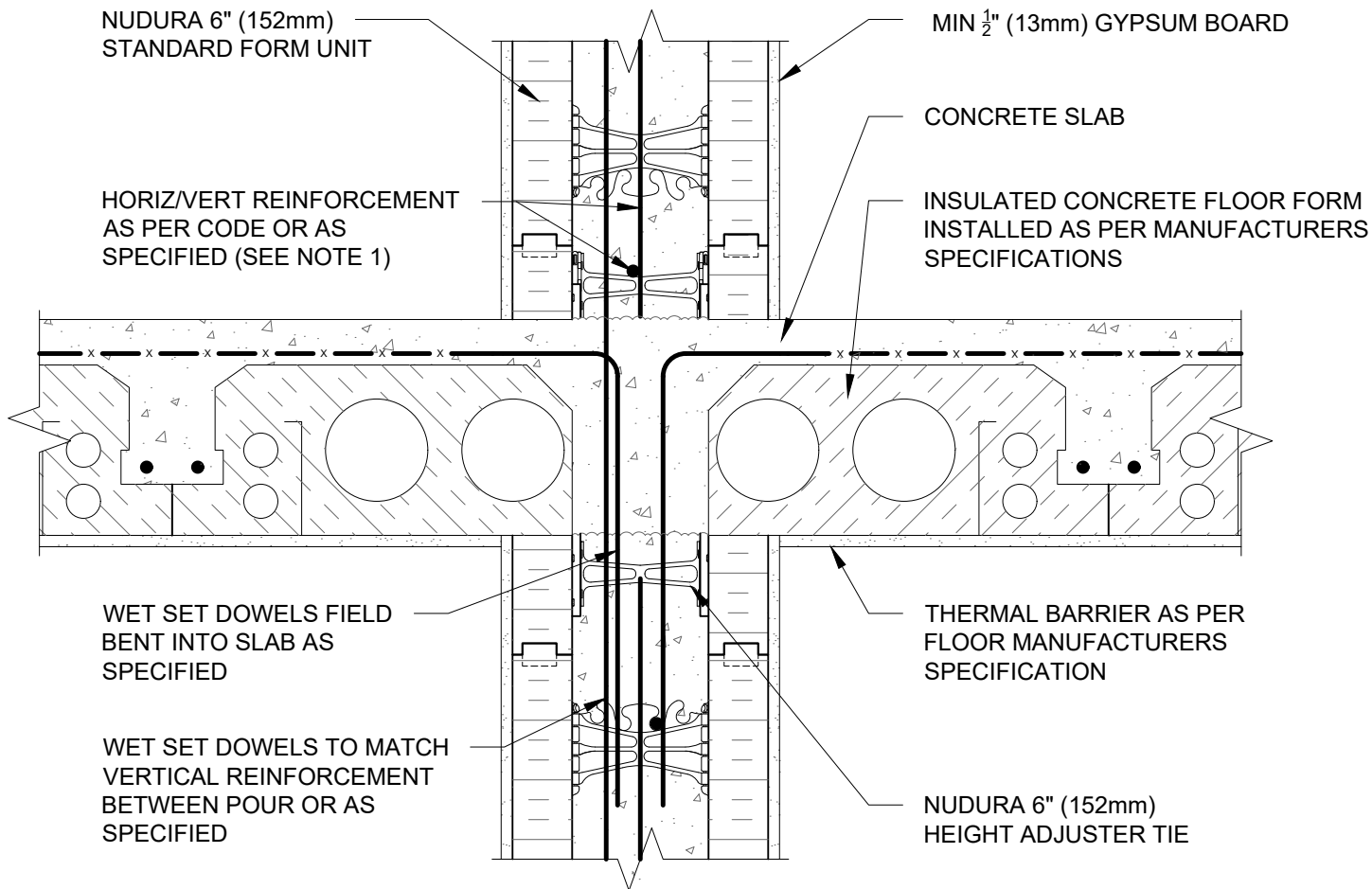
File Name:

G6D01



Construction Products Group

www.tremcocpg.com



NOTES:

1) FOR OPTIMAL REINFORCEMENT PLACEMENT IN THE NUDURA FORM, SPACING OF HORIZONTAL REINFORCEMENT TO BE SPECIFIED AT 18" (457mm) O.C. AND VERTICAL REINFORCEMENT TO BE SPECIFIED AT MULTIPLES OF 8" (203mm) O.C. REFER TO NUDURA REINFORCEMENT PLACEMENT DETAILS.

This detail is for general informational purposes only. The project design professional determines, in its sole discretion, whether this detail or a functionally equivalent detail is best suited for the project with respect to any architecture, engineering, and design requirements, including any local building code requirements. If this document is not reviewed and the product is not approved for use by a licensed design professional, the customer agrees that the detail may contain substantive flaws requiring correction, and hereby releases Tremco CPG Inc. from any and all liability related to the design and installation of the product. This detail is subject to change without notice. Contact Tremco to ensure you have the most recent version.

Non-Combustible Construction - Demising Wall Intermediate Floor Connections



Nudura Technical Support: 866-468-6299
International: +1 705-726-9499

Detail: Nudura 6" (152mm) Form Unit, ICFS Connection, ICFS Resting on Form, Non-Bearing Demising Wall

Drawn by: KS

Checked by: KS

Scale: 1:8

Revision #: 01

Revised by: KAB

Date: 3/13/2024

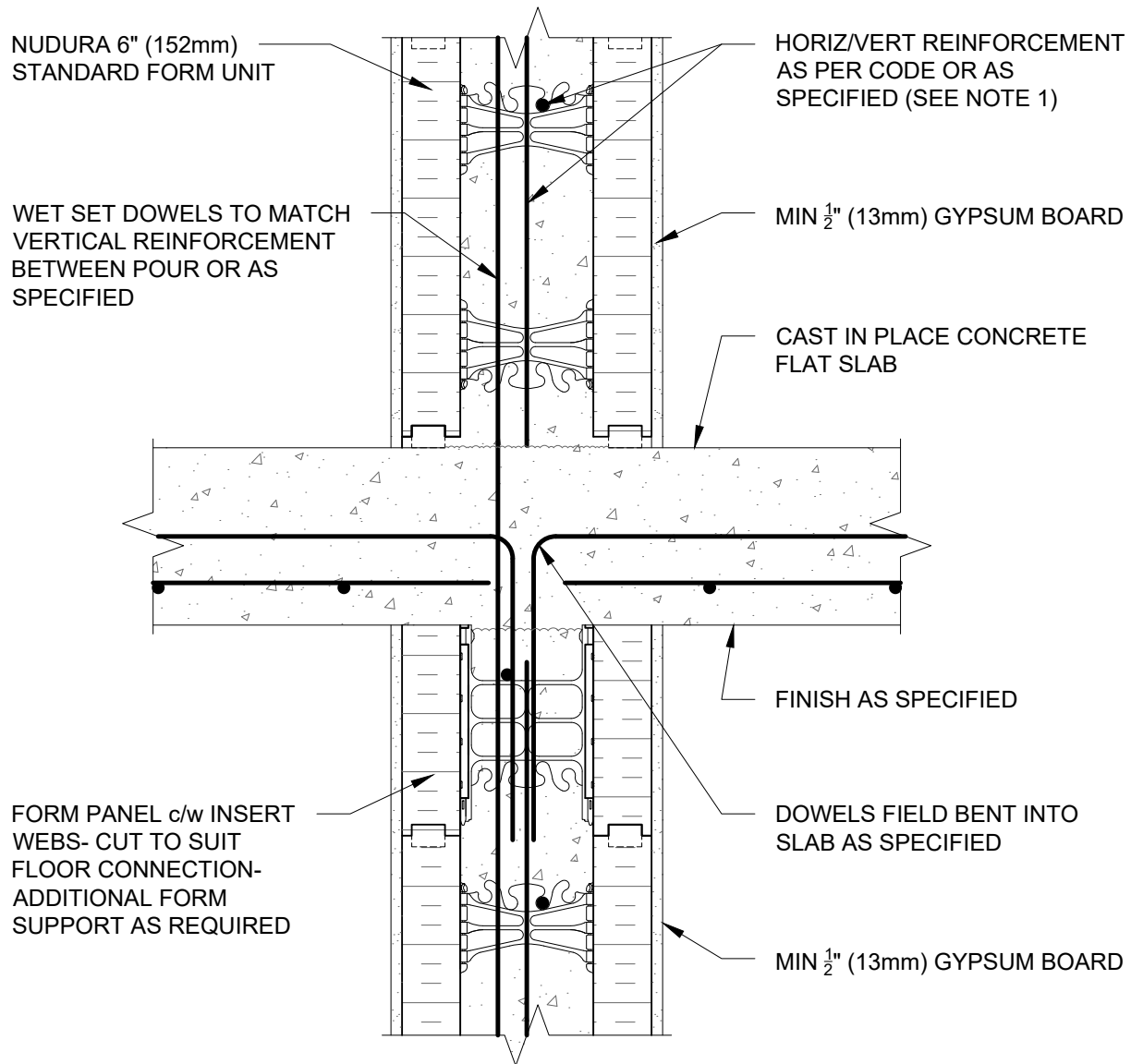
File Name:

G6D02



Construction Products Group

www.tremcocpg.com



NOTES:

1) FOR OPTIMAL REINFORCEMENT PLACEMENT IN THE NUDURA FORM, SPACING OF HORIZONTAL REINFORCEMENT TO BE SPECIFIED AT 18" (457mm) O.C. AND VERTICAL REINFORCEMENT TO BE SPECIFIED AT MULTIPLES OF 8" (203mm) O.C. REFER TO NUDURA REINFORCEMENT PLACEMENT DETAILS.

This detail is for general informational purposes only. The project design professional determines, in its sole discretion, whether this detail or a functionally equivalent detail is best suited for the project with respect to any architecture, engineering, and design requirements, including any local building code requirements. If this document is not reviewed and the product is not approved for use by a licensed design professional, the customer agrees that the detail may contain substantive flaws requiring correction, and hereby releases Tremco CPG Inc. from any and all liability related to the design and installation of the product. This detail is subject to change without notice. Contact Tremco to ensure you have the most recent version.

Non-Combustible Construction - Demising Wall Intermediate Floor Connections



Nudura Technical Support: 866-468-6299
International: +1 705-726-9499

Detail: Nudura 6" (152mm) Form Unit, Concrete Flat Plate, Bearing Demising Wall

Drawn by: KS

Checked by: KS

Scale: 1:8

Revision #: 01

Revised by: KAB

Date: 3/13/2024

File Name:

G6E01



Construction Products Group

www.tremcocpg.com